




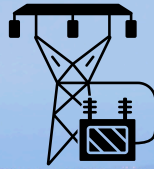
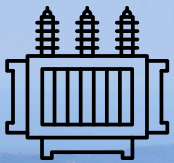
Mobile : +98-9125956744

 : +98-21- 8880 6606

Fax : +98-21- 8893 9395

E-mail: [info@batabtech.com](mailto:info@batabtech.com)

# Product Brochure



ENERGY INDUSTRY  
POWER INDUSTRY  
OIL & GAS INDUSTRY



# ACOUSTIC CAMERA-POWER

In the power industry, the acoustic camera is primarily used for detecting partial discharges in electrical equipment. the acoustic camera can quickly determine the type of partial discharge through Phase-Resolved Partial Discharge (PRPD) analysis and provide an assessment of the severity of the fault.

The integration of an infrared module further broadens the application scenarios of the equipment. it allows the acoustic camera can be used to identify thermal anomalies, providing a more comprehensive diagnostic tool for electrical equipment monitoring and maintenance.



**13MP optical camera**

**200m operation distance**

**7 hours operation time**

**640\*512 resolution infrared**

**NETD 40mk**



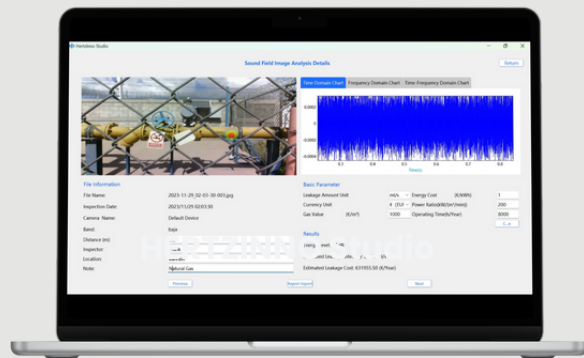
# ACOUSTIC CAMERA-GAS

Acoustic cameras enable fast and precise gas leak detection through real-time visualization, remote non-contact inspection, and high sensitivity, enhancing industrial safety and maintenance efficiency.

Acoustic cameras also provide gas leak estimation, and the acoustic images they generate can be archived and used for trend analysis, aiding in preventive maintenance, identifying potential risks, reducing unplanned downtime, and enhancing equipment stability.







Enables rapid localization of leak points and real-time assessment of leak volumes, making potential losses immediately apparent.



- 138 microphones**
- 13MP optical camera**
- 4 hours operation time**
- Thermal Function(Optional)**
- ATEX certificates**

# ACOUSTIC CAMERA

Model	HZ-HA-270P	HZ-HA-170P	HZ-HA-271P	HZ-HA-171P
Picture				
Microphones	138 Microphones	138 Microphones	128 Microphones	128 Microphones
Dynamic Range of Camera	-30dB ~ 120dB	-30dB ~ 120dB	-30dB ~ 120dB	-30dB ~ 120dB
Dynamic Range of Sensor	30dB ~ 120dB	30dB ~ 120dB	30dB ~ 120dB	30dB ~ 120dB
Operating Distance	0.3m~210m	0.3m~210m	0.3m~200m	0.3m~200m
Frequency Bandwidth	2kHz ~ 100kHz	2kHz ~ 100kHz	2kHz ~ 100kHz	2kHz ~ 100kHz
Optical Camera	13MP	13MP	13MP	13MP
Low Lux	0.5Lux/F2.0	0.5Lux/F2.0	0.5Lux/F2.0	0.5Lux/F2.0
Photo Image Resolution	4K (3840*2160)	4K (3840*2160)	4K (3840*2160)	4K (3840*2160)
Digital Zoom	8x	8x	8x	8x
Video Image Resolution	1080P	1080P	1080P	1080P
Storage	Internal 64GB	Internal 64GB	Internal 64GB	Internal 64GB
Video record	5min	5min	5min	5min
Display*	720P	720P	720P	720P
Wi-Fi	2.4G/5G	2.4G/5G	2.4G/5G	2.4G/5G
Battery Operating Time	4 hours	4 hours	7 hours	7 hours
Replaceable Battery	NA	NA	2	2
Protection Level	IP54	IP54	IP54	IP54
ATEX	Ex ib IIIC T80°C Db Ex ib IIC T4 Gb	Ex ib IIIC T80°C Db Ex ib IIC T4 Gb	NA	NA
Thermal	640*512	NA	640*512	NA